

**From West of Raleigh Traveling on I-40:** Travel east on I-40 to Exit 298-A (South Saunders Street—Downtown). Once on South Saunders, bear right when the road splits into McDowell Street and follow McDowell Street to South Street. Turn **RIGHT** on South Street and proceed two blocks and turn **LEFT** onto Wilmington Street. The Raleigh Convention Center Underground Parking deck located beneath the Charter Square South Building is the first Public Parking entrance on the **LEFT**.

**From Airport or North of Raleigh Traveling on U.S. Hwy 70:** Travel east on Hwy 70 until crossing under the Beltline (Interstate I-440). Hwy 70 becomes Glenwood Avenue. Stay on Glenwood Avenue until reaching Hillsborough Street. Turn **LEFT** onto Hillsborough Street and go a few blocks until Hillsborough Street ends at Salisbury Street. Take a **RIGHT** onto Salisbury Street. Travel 5½ blocks and turn **LEFT** onto Lenoir Street. Turn **LEFT** onto Wilmington Street. The Raleigh Convention Center Underground Parking deck located beneath the Charter Square South Building is the first Public Parking entrance on the **LEFT**.

**From Southwest of Raleigh Traveling on U.S. Hwy 1 and 64:** Travel northeast on US Hwy 1 and 64 to the intersection of I-40. Travel east (toward South Raleigh) on I-40 to Exit 298-A (South Saunders Street—Downtown). Once on South Saunders, bear **RIGHT** when the road splits into McDowell Street and follow McDowell Street to South Street. Turn **RIGHT** on South Street and proceed two blocks and turn **LEFT** onto Wilmington Street. The Raleigh Convention Center Underground Parking deck located beneath the Charter Square South Building is the first Public Parking entrance on the **LEFT**.

**From East of Raleigh Traveling on U.S. Hwy 64:** Travel west until you reach the Raleigh Beltline (Interstate I-440) and take the second exit ramp onto I-440 heading south. Travel toward south Raleigh on I-440 to Exit 298-A (South Saunders Street—Downtown). Once on South Saunders, bear **RIGHT** when the road splits into McDowell Street and follow McDowell Street to South Street. Turn **RIGHT** on South Street and proceed two blocks and turn **LEFT** onto Wilmington Street. The Raleigh Convention Center Underground Parking deck located beneath the Charter Square South Building is the first Public Parking entrance on the **LEFT**.

**\*PARKING:** Parking for the office is located at the Convention Center Underground Deck Public Entrance at 502 S. Wilmington Street, Raleigh, NC. The parking deck is the first Public Parking available on the left. **Yellow reserved parking spaces 7, 8 and 9 on level P3 are designated for Womble Carlyle Client Parking.** Please park there if available. If these spaces are occupied, other public parking is available in white spaces only. Use the Charter Square Access Elevator (with Womble Carlyle access code, provided separately) and proceed to the Charter Square Lobby. If you do not have the access code, use the Fayetteville Street Access Elevator and proceed to the Street Level (SL) Lobby on Fayetteville Street. Upon exiting the Street Level Lobby, Charter Square South entrance is to your left.

Parking for the office may also be accessed under the Raleigh Marriott Hotel at the Convention Center Underground Deck Entrance at 1 W. Lenoir Street, Raleigh, NC. Upon entering the deck **follow the Yellow P3 Fayetteville Street Access signs to locate the yellow reserved parking spaces 7, 8 and 9 on level P3 designated for Womble Carlyle Client Parking.** If these spaces are occupied other public parking is available in white spaces only. Use the Charter Square Access Elevator (with Womble Carlyle access code, provided separately) and proceed to the Charter Square Lobby. If you do not have the access code use the Fayetteville Street Access Elevator and proceed to the Street Level (SL) Lobby on Fayetteville Street. Upon exiting the Street Level Lobby, Charter Square South entrance is to your left.

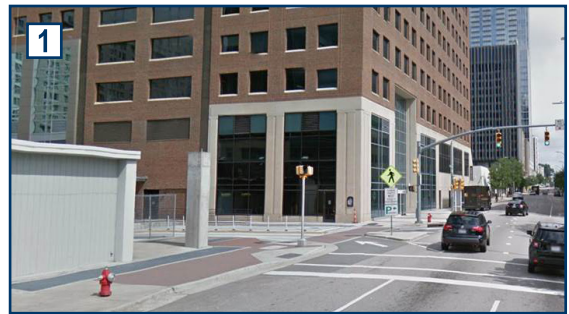
The security guard will escort you to the elevator and up to our main floor, 11 to the reception area. Please bring your parking ticket with you for validation.

*Note: There are a number of parking choices. Parking can only be validated for the Convention Center Underground Deck.*

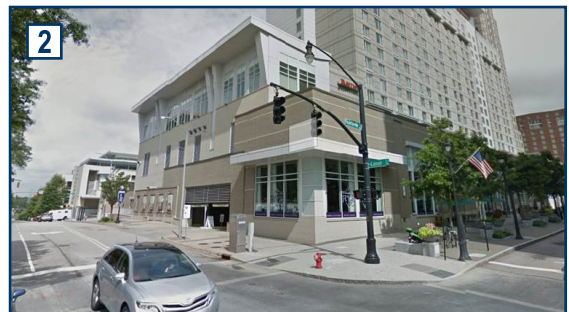
DIRECTIONS | Raleigh, NC



- E** Charter Square Access Elevator
- 1** 502 S. Wilmington Street Entrance
- 2** 1 W. Lenoir Street Entrance



Convention Center Underground Deck,  
502 S. Wilmington Street Entrance



Convention Center Underground Deck,  
1 W. Lenoir Street Entrance  
(for parking underneath Raleigh Marriott Hotel)